

Dial Indicators



SERIES 3, 4 — Long Stroke Type, Large Diameter

- Dial indicators with a large-diameter dial face for easy reading.
- The indicator is highly durable thanks to its oil- and water-tight design, quenched hardened stainless-steel, carbide contact point, and a grand gear made of wear- and deformation-resistant material.
- Application of an anti-reflective and hard surface coating improves scale visibility along with scratch and chemical resistance.

Optional Accessories

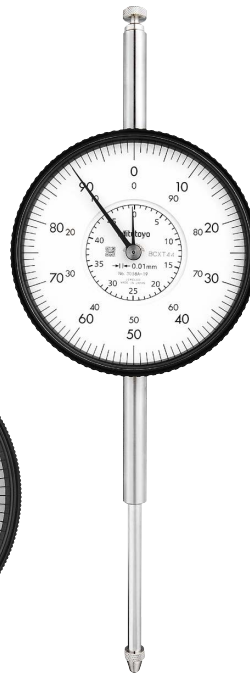
- Limit hand (2 pcs.), Bezel clamp
Refer to page 07-31 for details.



3109A-10



4046A



3058A-19

SPECIFICATIONS

ISO/JIS type ANSI/AGD type

Metric		ISO/JIS type										ANSI/AGD type	
Code No.		Graduation (mm)	Range (range/rev) (mm)	Maximum permissible error (MPE) (μm)						Dial reading	Measuring force (N)		
w/lug	Flat-back			Indication error				Hysteresis	Repeat-ability				
				1/10 Rev	1/2 Rev	1 Rev	Measuring range						
3046A	3046AB	0.01	10 (1)	5	9	10	15	3	3	±0-100	1.4 or less		
3047A	3047AB	0.01	10 (1)	5	9	10	15	3	3	0-50-0	1.4 or less		
3050A	3050AB	0.01	20 (1)	8	10	15	20	5	4	±0-100	2.0 or less		
3052A-19	3052AB-19	0.01	30 (1)	10	12	15	25	7	5	±0-100	2.5 or less		
3058A-19	3058AB-19	0.01	50 (1)	10	12	15	30	8	5	±0-100	3.0 or less		
3060A-19*1	3060AB-19*1	0.01	80 (1)	12	17	20	45	9	5	±0-100	3.0 or less		
3062A-19*1	3062AB-19*1	0.01	100 (1)	12	17	20	50	9	5	±0-100	3.5 or less		
3109A-10	3109AB-10	0.001	1 (0.2)	2	3.5	4	5	2	0.5	0-100-0	1.5 or less		
4046A	4046AB	0.01	10 (1)	5	9	10	15	3	3	±0-100	1.4 or less		

Inch									
Code No.		Graduation (in)	Range (range/rev) (in)	Accuracy*2 (in)		Repeat-ability (in)	Dial reading	Measuring force (N)	
w/lug	Flat-back			First 1 Rev/2.5 Rev/10 Rev	Retrace				
3414A	3414AB	0.001	0.5 (0.1)	±0.001/±0.001/±0.001		0.0002	±0-100	1.8 or less	
3415A	3415AB	0.001	0.5 (0.1)	±0.001/±0.001/±0.001		0.0002	±0-50-0	1.8 or less	
3416A	3416AB	0.001	1 (0.1)	±0.001/±0.001/±0.002		0.0002	±0-100	1.8 or less	
3417A	3417AB	0.001	1 (0.1)	±0.001/±0.001/±0.002		0.0002	0-50-0	1.8 or less	
3424A-19	3424AB-19	0.001	2 (0.1)	±0.001/±0.001/±0.002 / ±0.003 (20 Rev)		0.00033	±0-100	3.0 or less	
3426A-19*1	3426AB-19*1	0.001	3 (0.1)	±0.001/±0.001/±0.002/±0.003 (20 Rev)/±0.005 (Over 20 Rev)		0.00033	±0-100	3.0 or less	
3428A-19*1	3428AB-19*1	0.001	4 (0.1)	±0.001/±0.001/±0.002/±0.003 (20 Rev)/±0.005 (Over 20 Rev)		0.00033	±0-100	3.5 or less	
3802A-10	3802AB-10	0.0001	0.025 (0.01)	±0.0001/±0.0001/—		0.0001	±0.00003	0-10	2.0 or less
3803A-10	3803AB-10	0.0001	0.025 (0.01)	±0.0001/±0.0001/—		0.0001	0±.00003	0-5-0	2.0 or less
4887A-19*1	4887AB-19*1	0.001	3 (0.1)	±0.001/±0.001/±0.002/±0.003 (20 Rev)/±0.005 (Over 20 Rev)		0.00033	±0-100	3.0 or less	

*1 Use in a vertical orientation (contact point downward) for the long stroke model.

*2 Completed products inspection is performed in the vertical orientation (contact point downward) and the stated accuracy is guaranteed.